



Trouble Shooting Manual for iReal

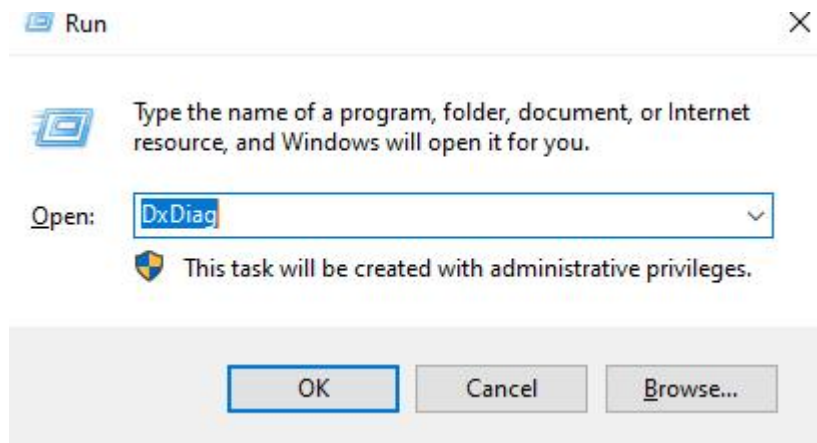
Contents

1	Computer Environment Check.....	2
1.1	Configuration Check.....	2
1.2	How to Set High Performance Mode of Computer Battery.....	3
1.3	How to Check and Change Graphics Sard Settings.....	5
1.4	Firewall and Third-party Protection Software.....	9
1.5	Device Connection Check.....	13
1.6	How to Uninstall Software and Driver.....	14
1.7	How to Update the Graphics Card.....	15
2	Scanner Settings.....	16
2.1	How to Check and Replace SET and Authorized Files.....	16

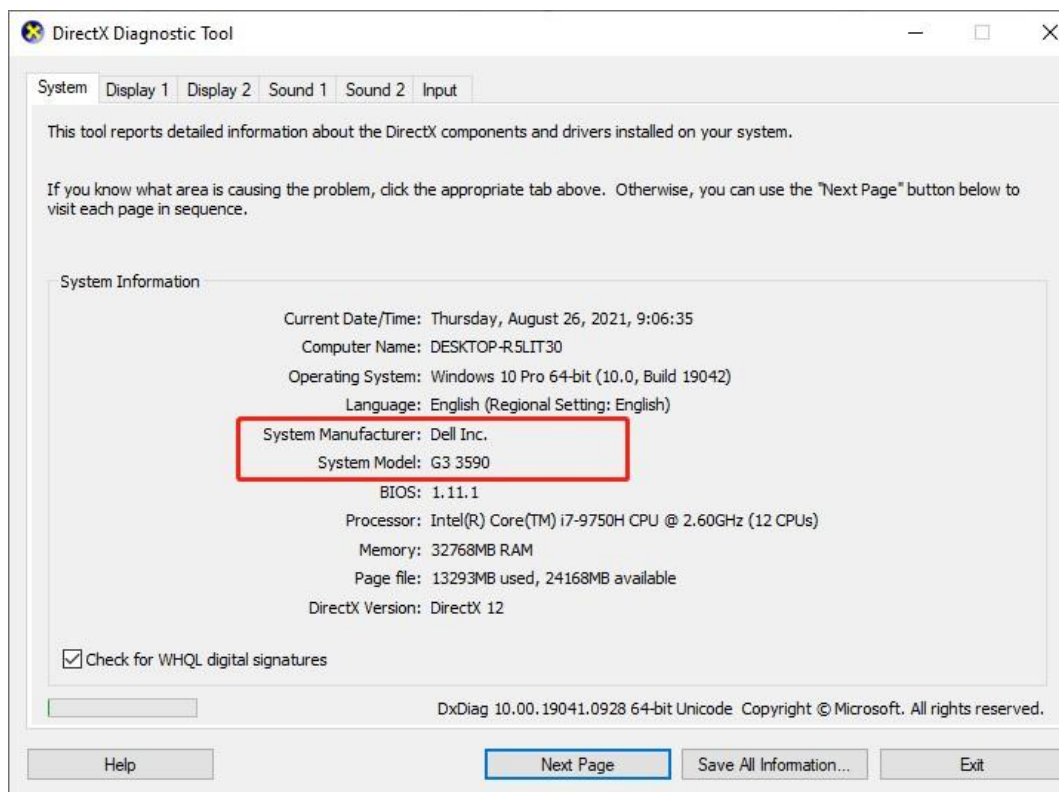
1 Computer Environment Check

1.1 Configuration Check

- 1) Press WIN+R, type dxdiag and then click OK.

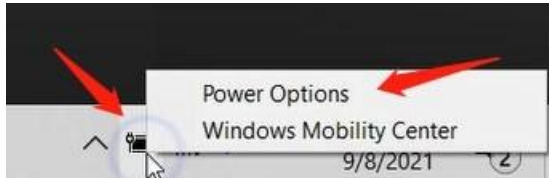


- 2) Check detailed information about the DirectX components and drivers on the system.

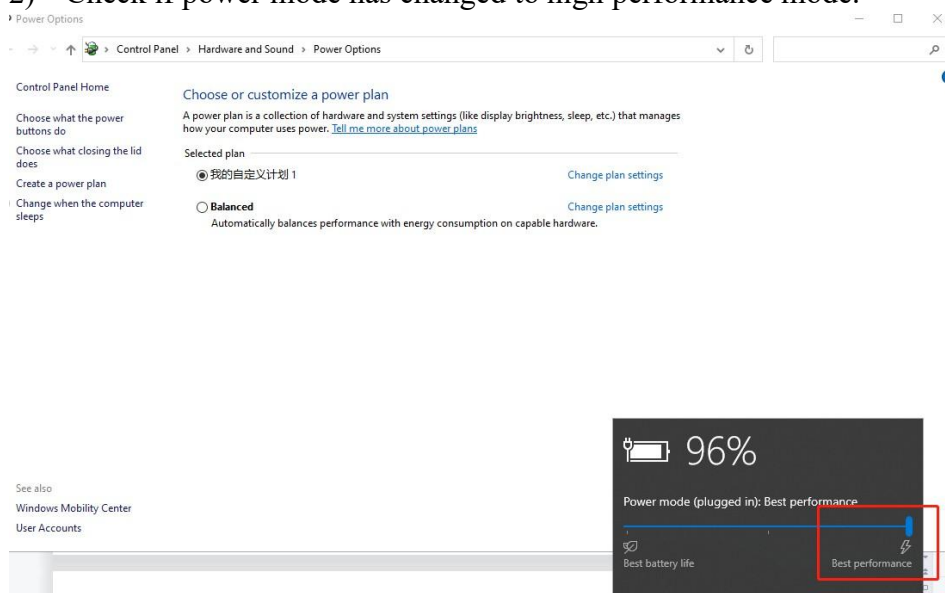


1.2 How to Set High Performance Mode of Computer Battery

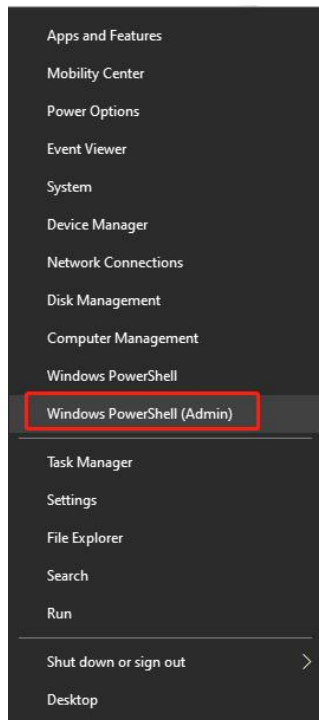
- 1) Right-click the power button icon and click Power Options.



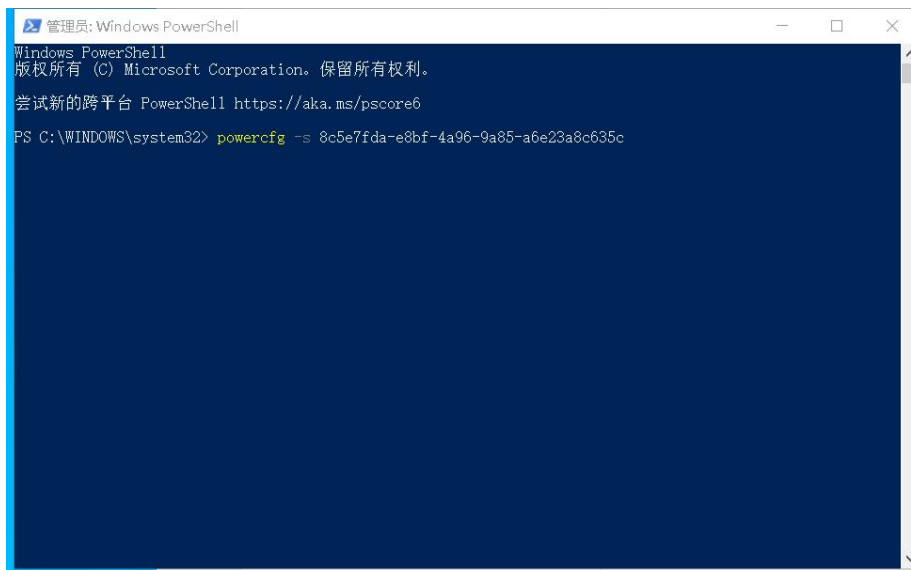
- 2) Check if power mode has changed to high performance mode.



- 3) If the power is not set to high performance mode, then press WIN+X to click Windows PowerShell (Admin).



- 4) Type this code to set high performance power mode: `powercfg -s 8c5e7fda-e8bf-4a96-9a85-a6e23a8c635c`. Press Enter to run it.



- 5) Reopen the settings to recheck the power mode.

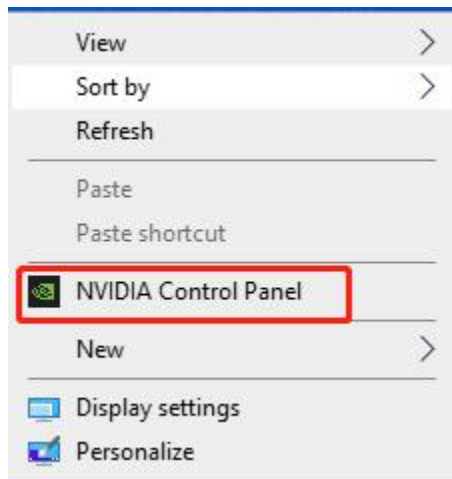
1.3 How to Check and Change Graphics Card Settings

- 1) Check if there is a NVIDIA control panel in the computer.

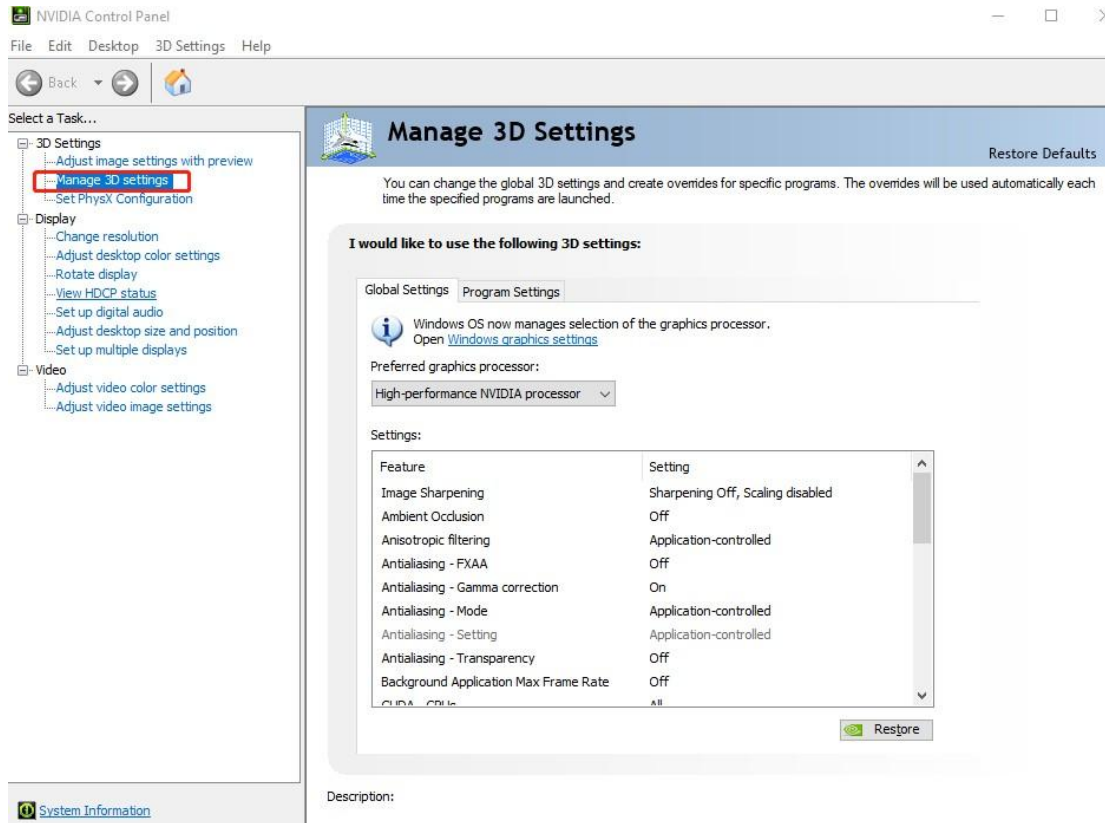


Install the driver of graphics card if it is not found.

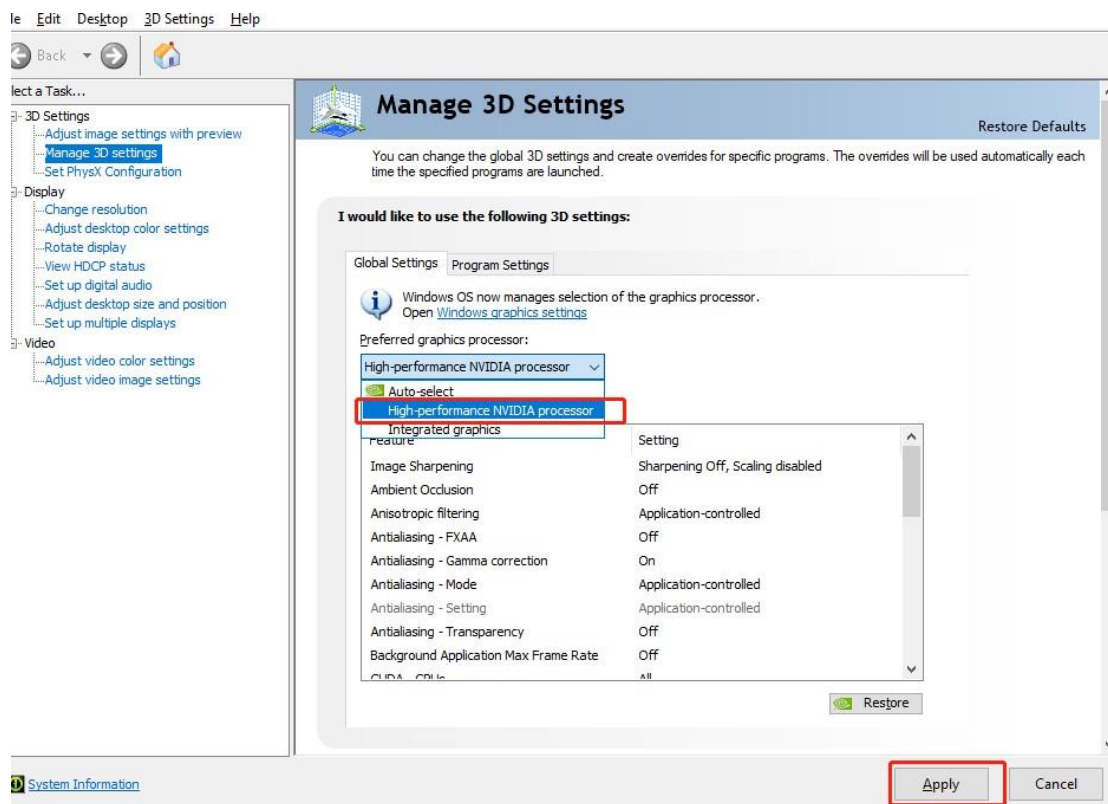
- 2) Open the NVIDIA Control Panel.



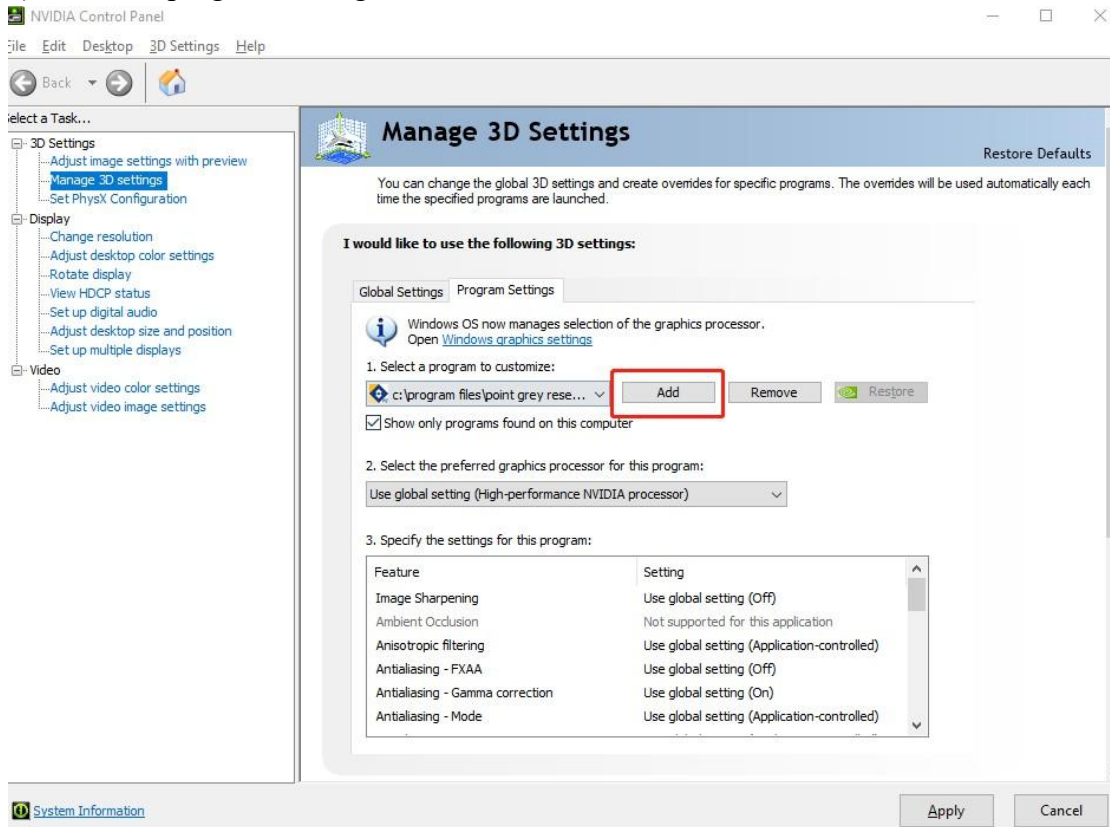
- 3) Click **Manage 3D settings**.



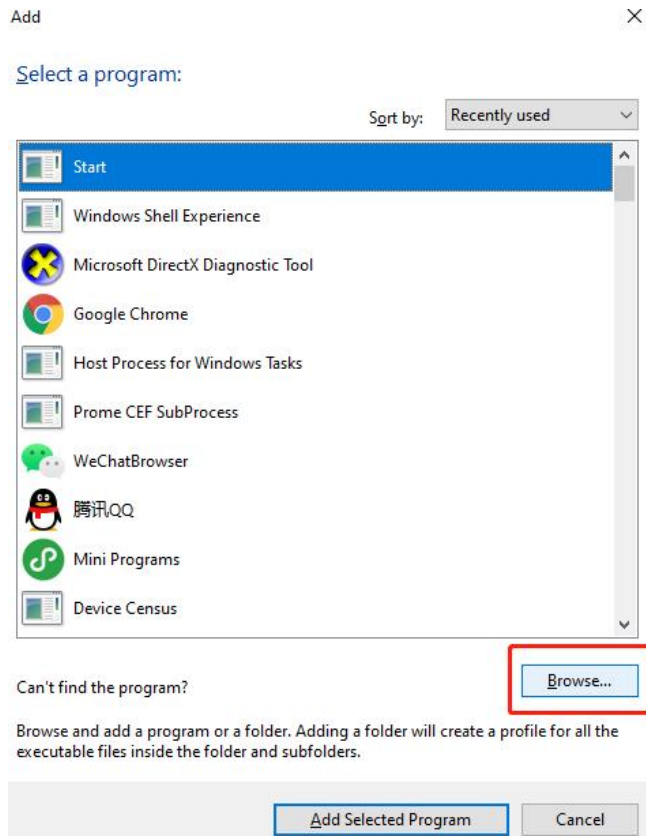
4) Choose high-performance NVIDIA processor and click Apply.



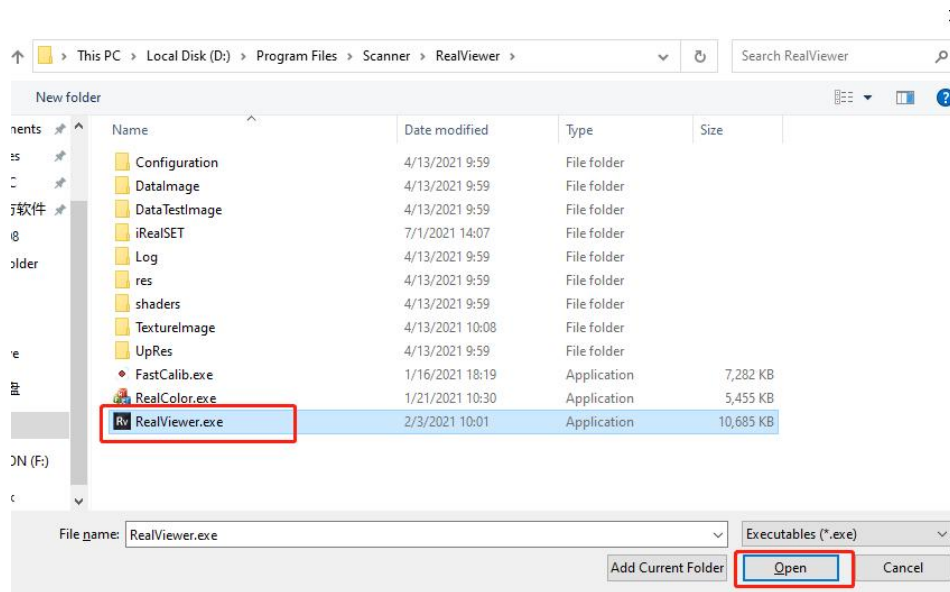
5) Choose program settings then click Add.



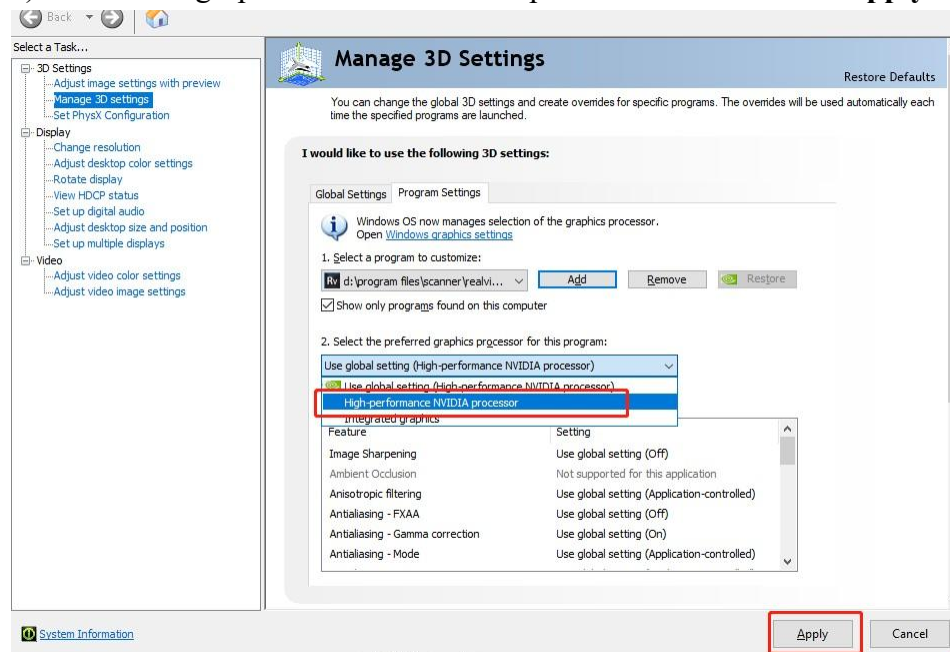
6) Click browse if there is no ReakViewer icon in the listing.



7) Locate the RealViewer software, then click Open.

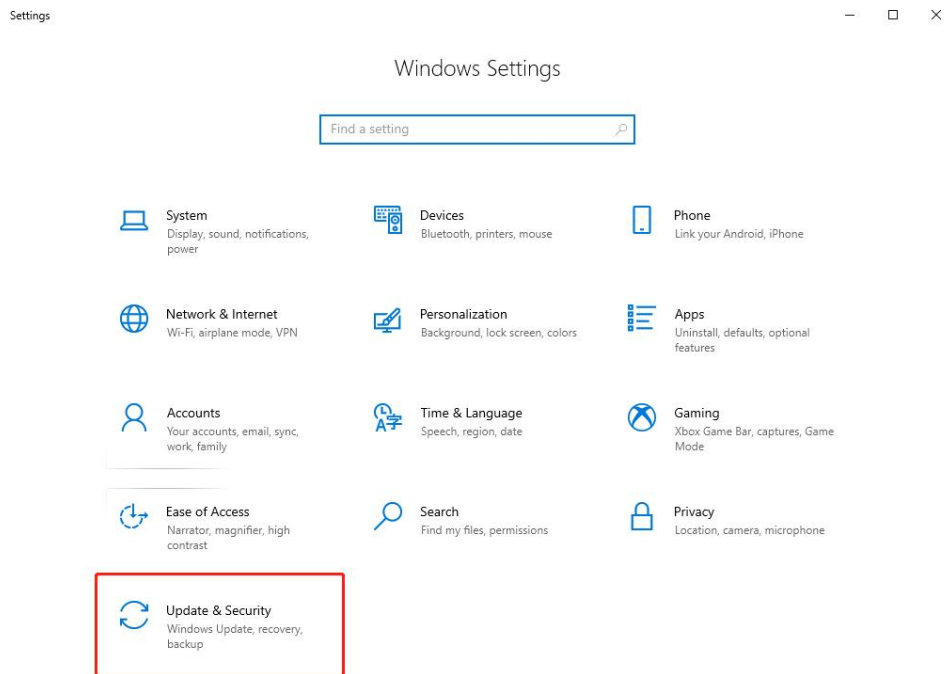


8) Choose high-performance NVIDIA processor and then click Apply.

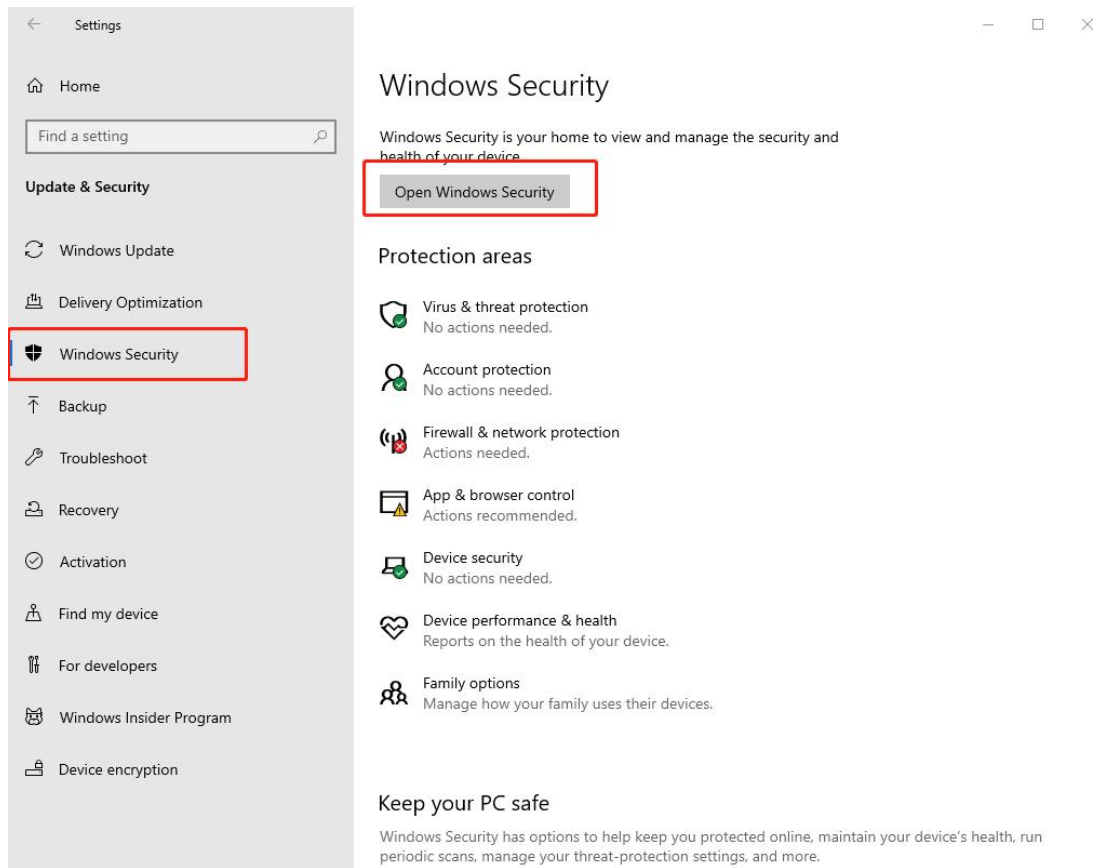


1.4 Firewall and Third-party Protection Software

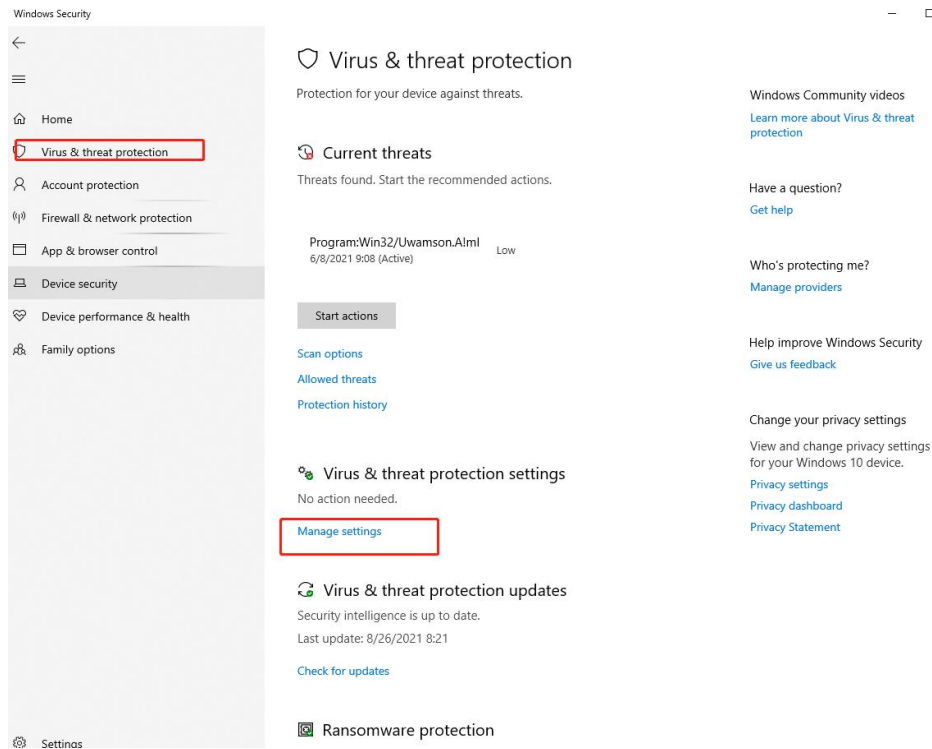
1) Open windows settings and click Update & security.



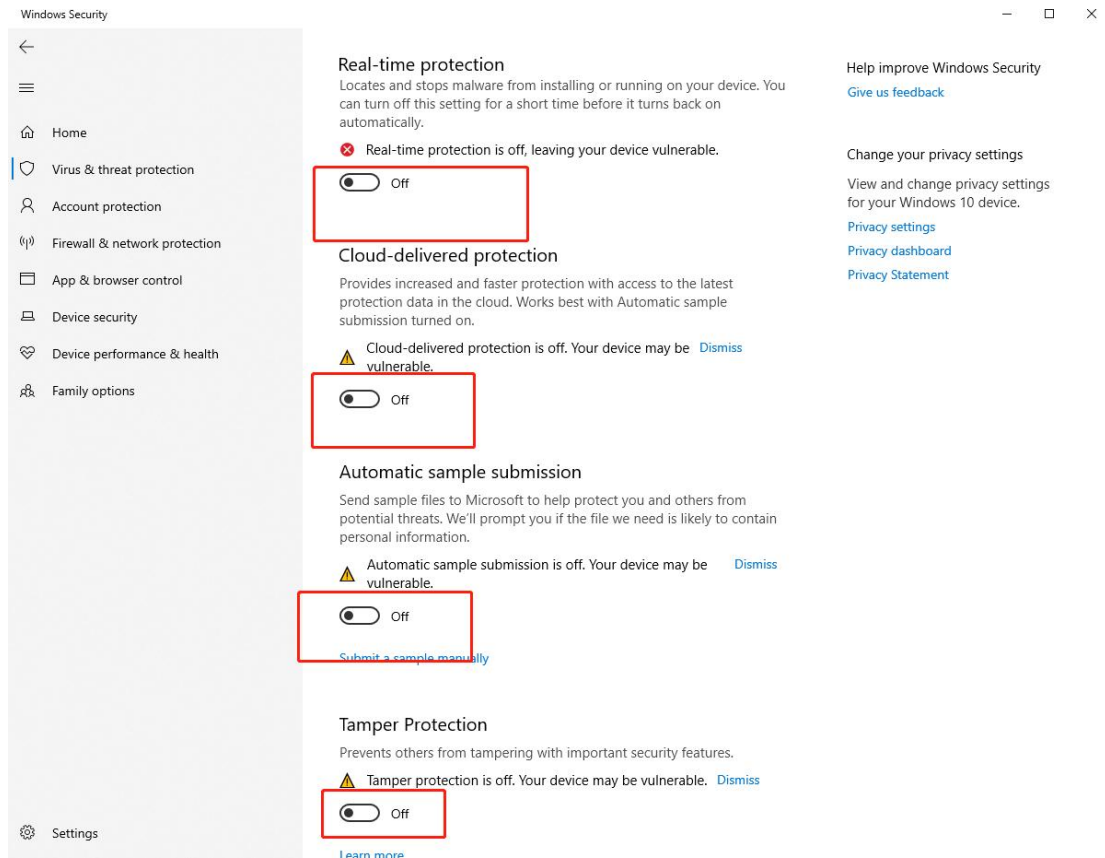
2) Click Windows security.



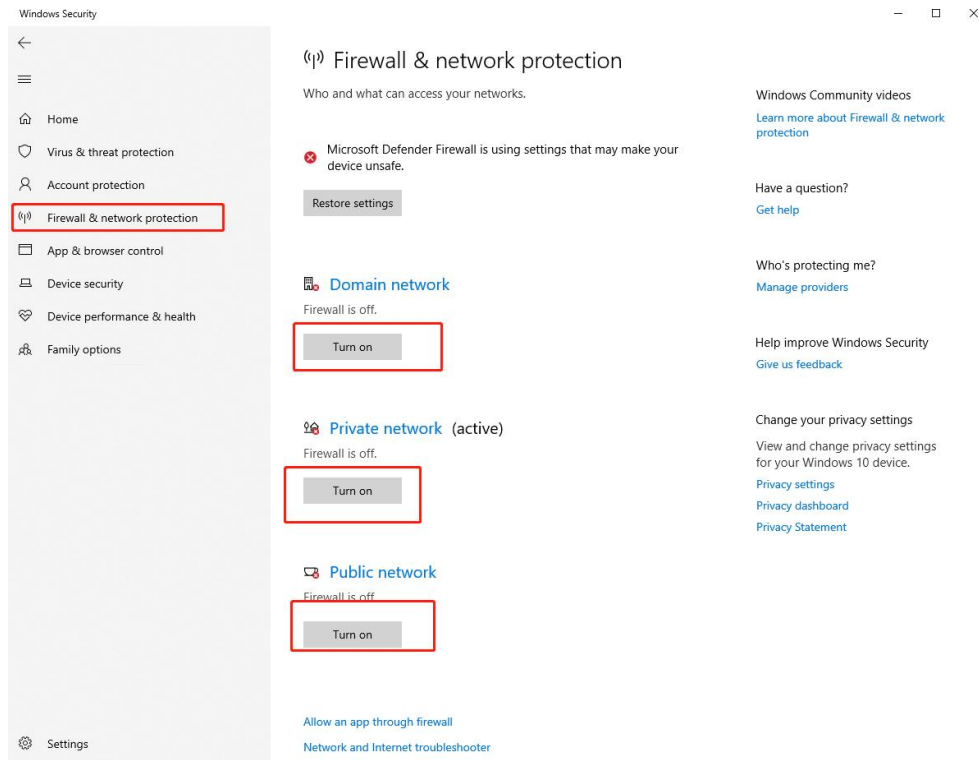
3) Select Virus & threat protection and click Manage settings.



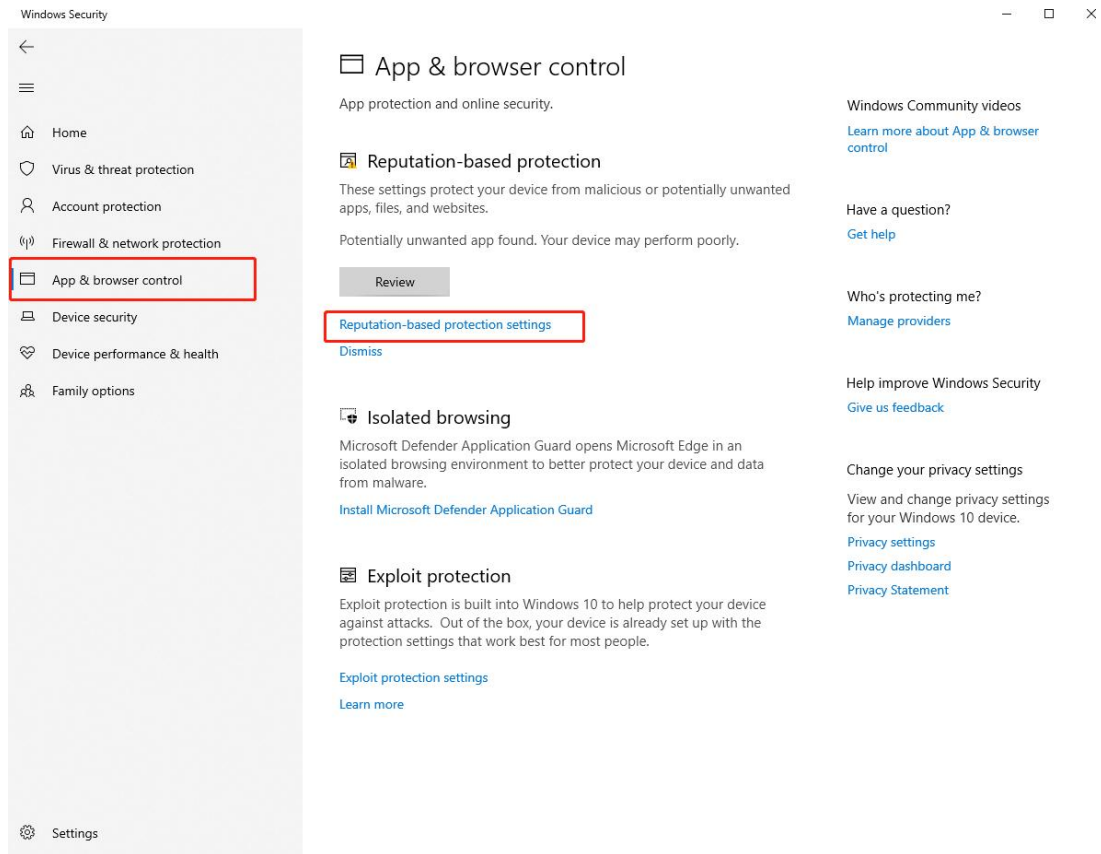
4) Turn off all the options.



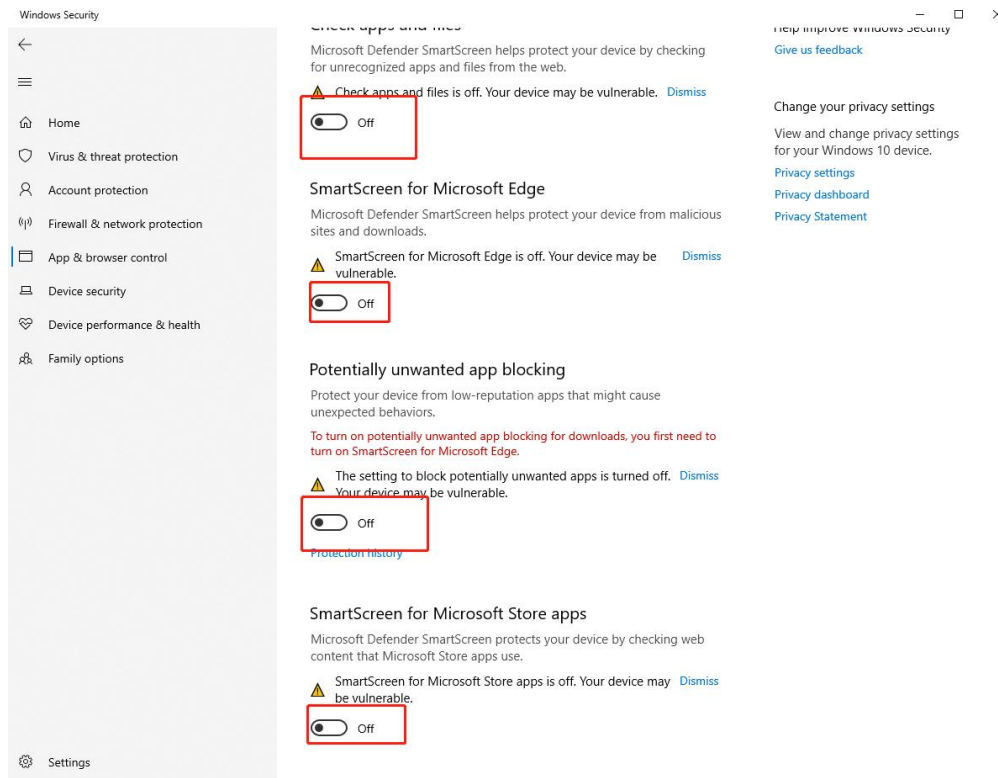
5) Select Firewall & network protection and turn off all the options.



6) Click Reputation-based protection settings under app & browser control panel.

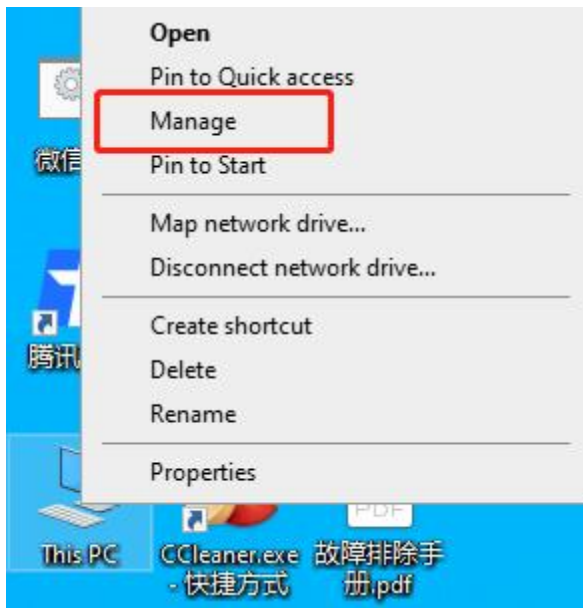


7) Turn off all the options.

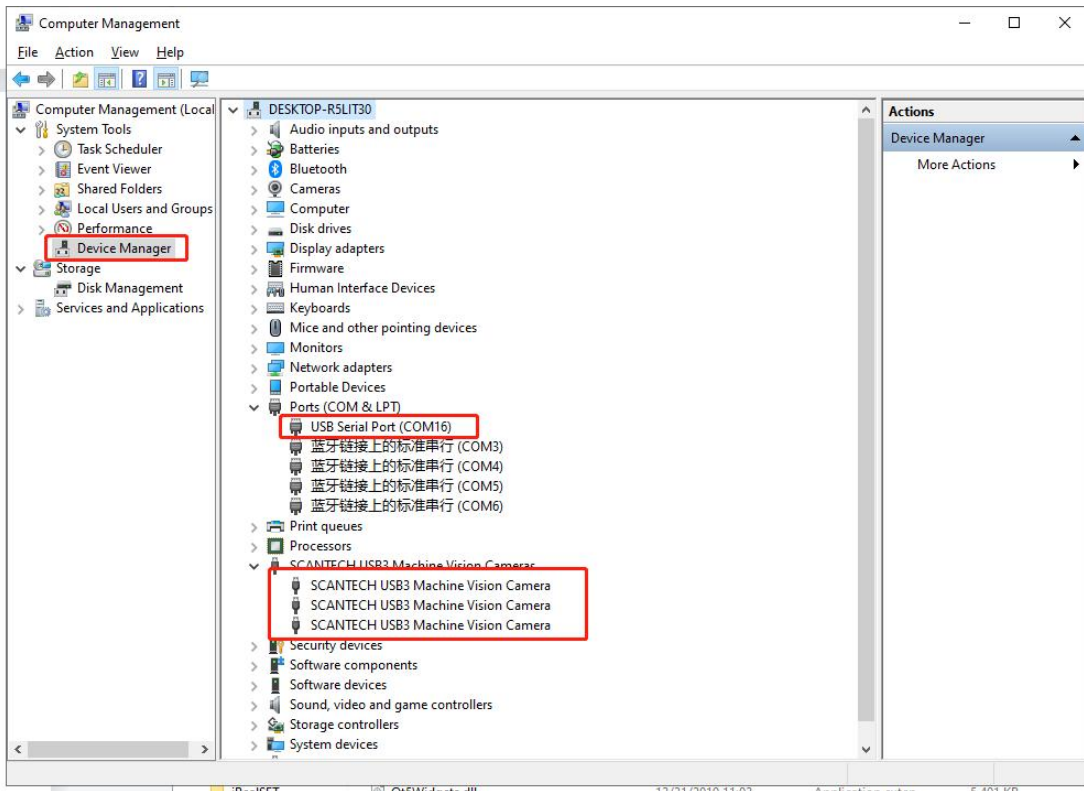


1.5 Device Connection Check

1) Right-click my PC and click Manage.

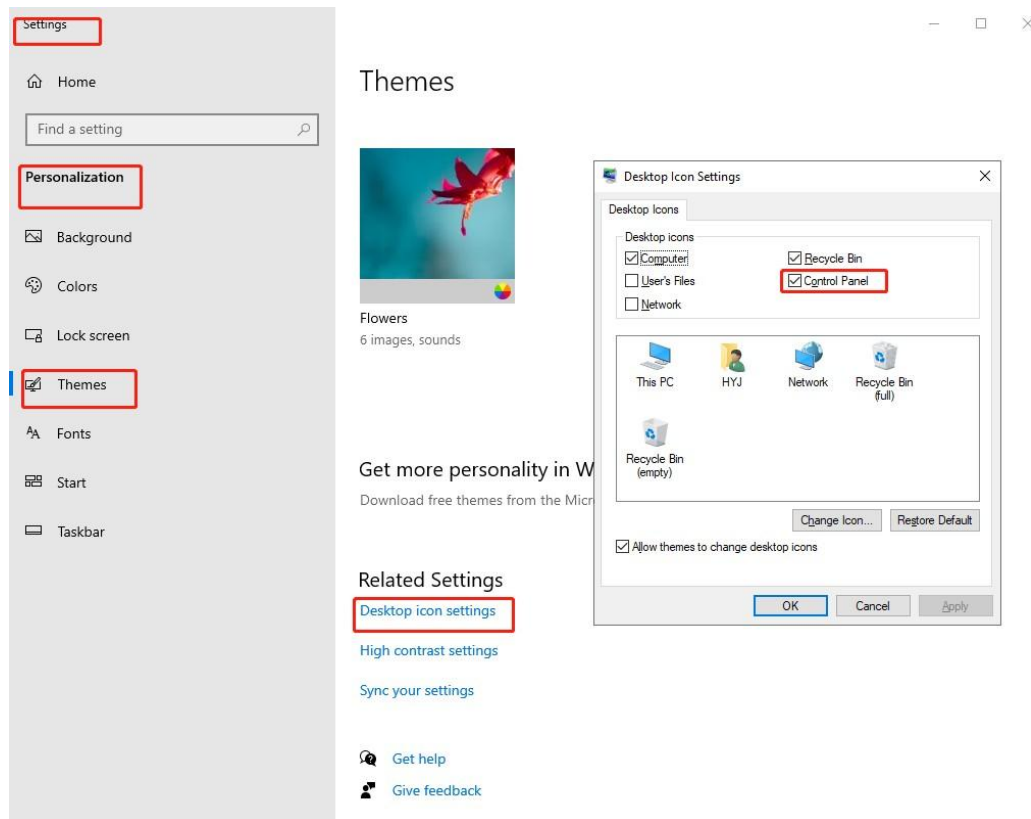


2) Click Device manager.



1.6 How to Uninstall Software and Driver

1) Open control panel.



2) Click Uninstall a program.

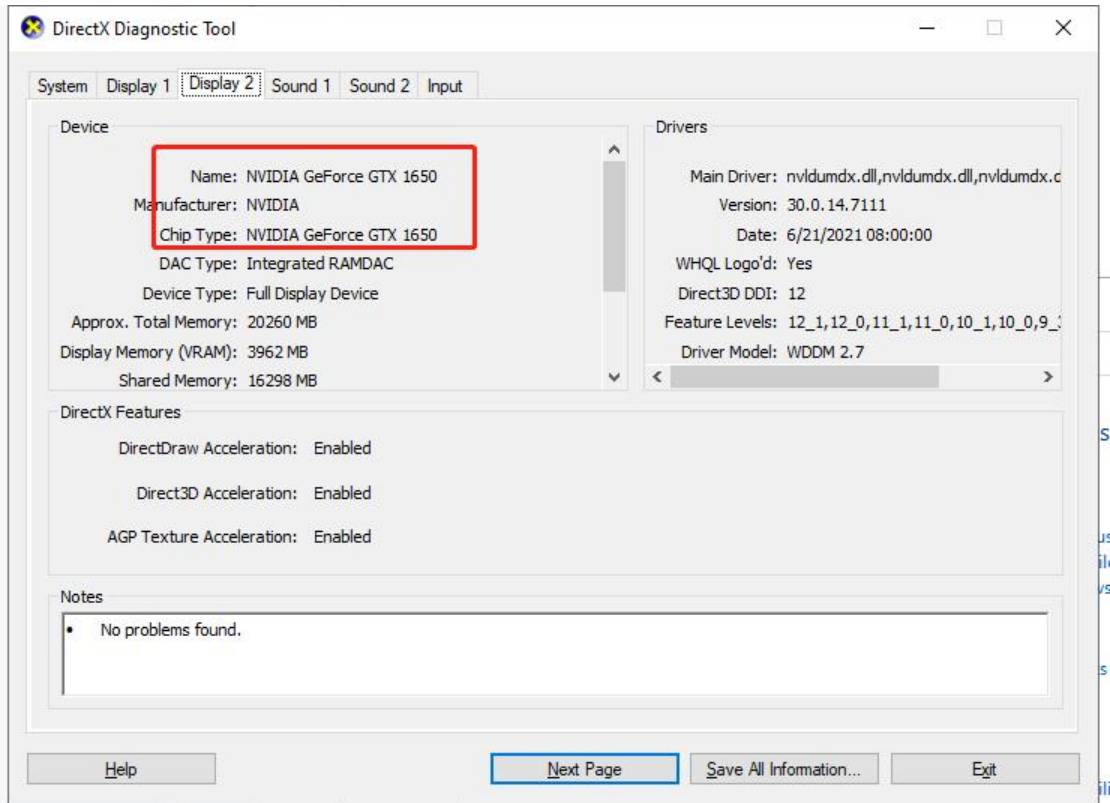


3) Locate the driver and the software and then uninstall them.

 RealViewer	ScanTech	2021/7/31	580 MB	2.6.8
 SCT	HANGZHOU SCANTECH CO., LTD.	2021/7/31		3.1.0
 SCT SDK Runtime x86 3.2.0.3	HANGZHOU SCANTECH CO., LTD.	2021/7/31		3.2.0.3
 SCT SDK Runtime x64 3.2.0.3	HANGZHOU SCANTECH CO., LTD.	2021/7/31		3.2.0.3

1.7 How to Update the Graphics Card

- 1) Check the graphics card confirmation at first.



- 2) Log in NVIDIA's official website to download the correct driver according to product series.
(Official website: <https://www.nvidia.com/en-us/>)

NVIDIA Driver Downloads

Select from the dropdown list below to identify the appropriate driver for your NVIDIA product.

Product Type:

Product Series:

Product:

Operating System:

Download Type:

Language:

- 3) Download the driver.

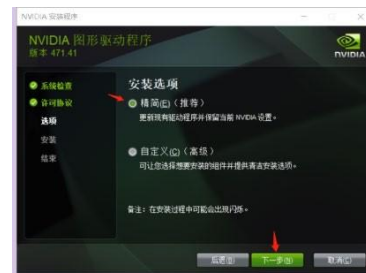
GEFORCE GAME READY DRIVER

Version: 471.68 WHQL
 Release Date: 2021.8.10
 Operating System: Windows 10 64-bit, Windows 11
 Language: English (US)
 File Size: 721.06 MB

[DOWNLOAD](#)

RELEASE HIGHLIGHTS	SUPPORTED PRODUCTS	ADDITIONAL INFORMATION
<p>Game Ready Drivers provide the best possible gaming experience for all major new releases. Prior to a new title launching, our driver team is working up until the last minute to ensure every performance tweak and bug fix is included for the best gameplay on day-1.</p> <p>Game Ready for Naraka: Bladepoint This new Game Ready Driver provides support for Naraka: Bladepoint, which utilizes NVIDIA DLSS and NVIDIA Reflex to boost performance by up to 60% at 4K and make you more competitive through the reduction of system latency. Additionally, this release also provides optimal support for the Back 4 Blood Open Beta and Psychonauts 2 and includes support for 7 new G-SYNC Compatible displays.</p> <p>Learn more in our Game Ready Driver article here.</p>		

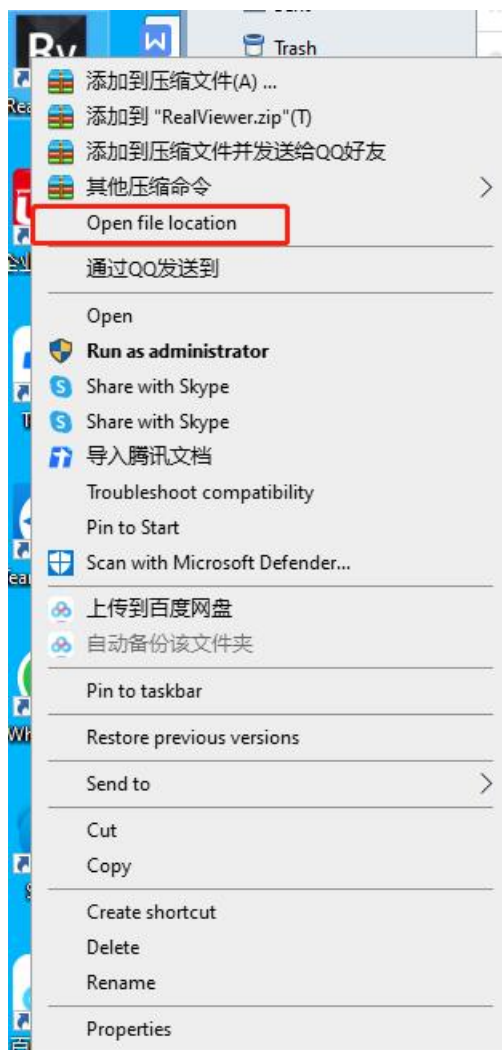
4) Reboot the system after finishing the installation.



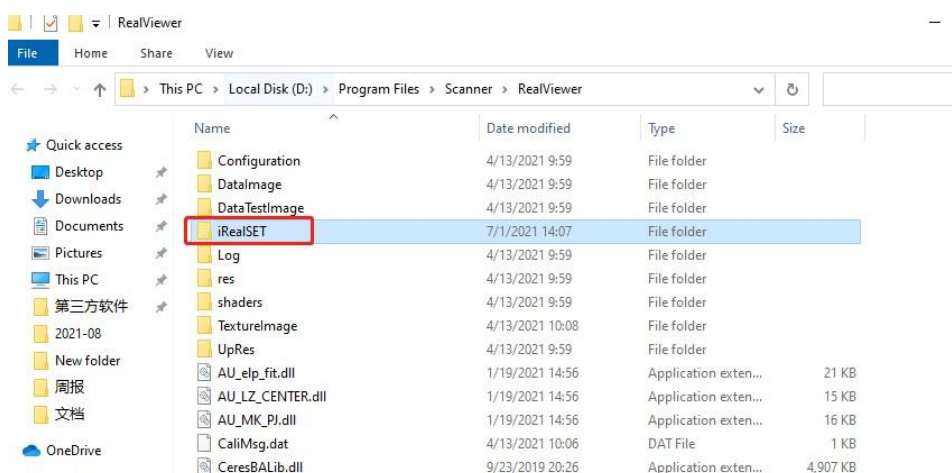
2 Scanner Settings

2.1 How to Check and Replace SET and Authorized Files

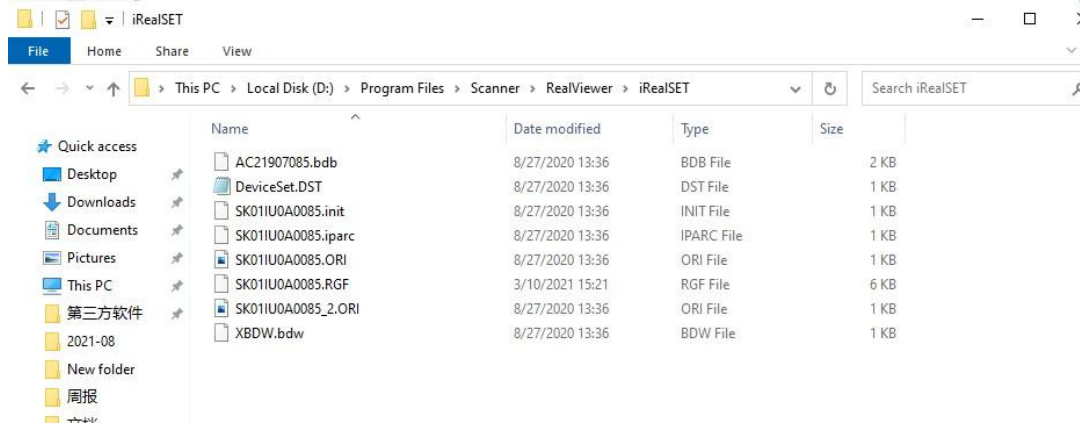
1) Right-click RealViewer and click Open file location.



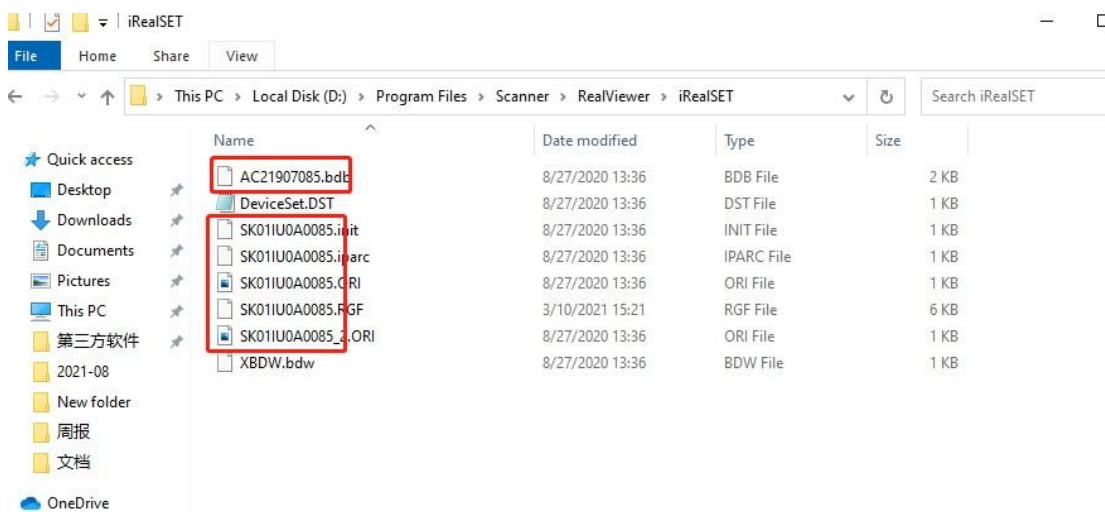
2) Click iRealSET folder.



3) Copy the correct SET files into iRealSET folder.



4) The SET file shall match the 3D scanner's serial number.



5) Copy the new. RGF file and paste it into this folder to update the authorization file.

